

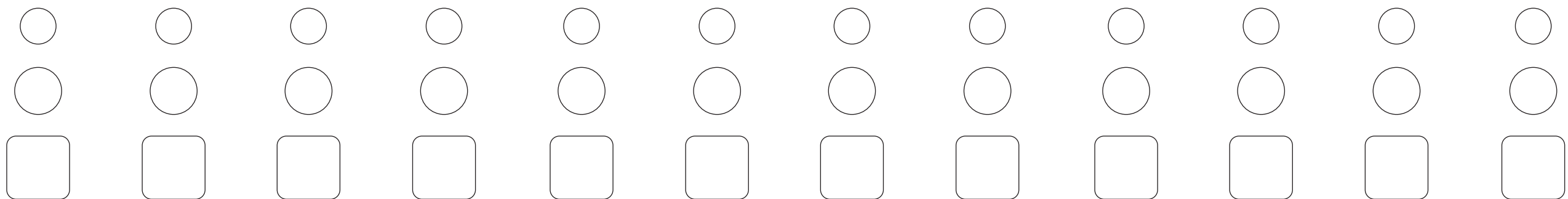
TAMMY TAYLOR PRACTICE SHEET

PRACTICE YOUR 5 MAIN NAIL SHAPES.

TAMMY TAYLOR NAILS
SOUTH AFRICA
CAREER OPPORTUNITIES

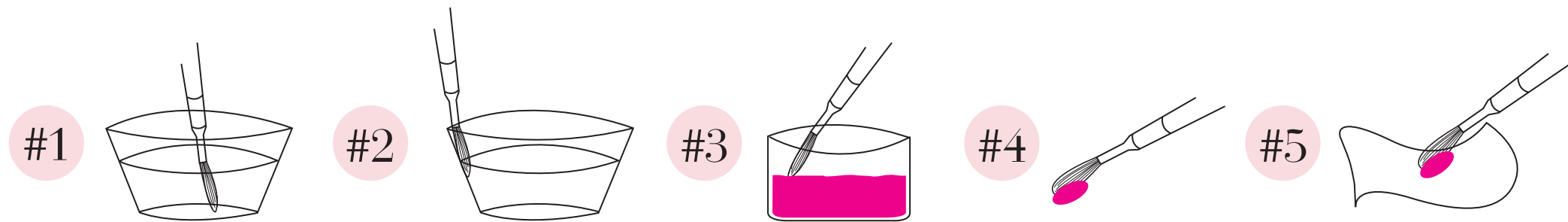


PRACTICE FILLING THE SQUARES & CIRCLES. PLACE - LIFT - LET FLOW ONLY. PRODUCT SHOULD NOT FLOW PAST THE LINES.

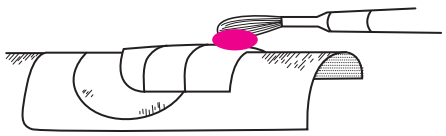
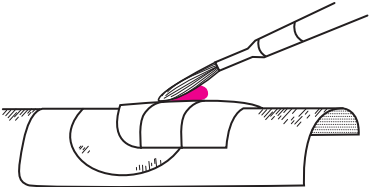
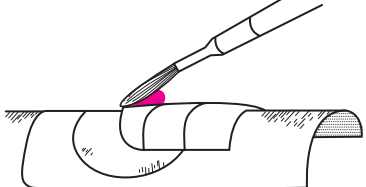
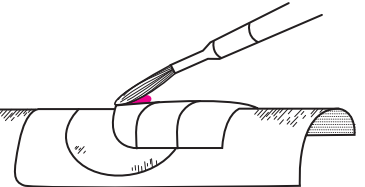


TAMMY TAYLOR PRACTICE SHEET

FIVE STEPS OF GETTING STARTED

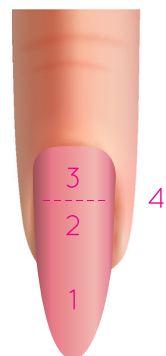


PRODUCT BALL ON TIP OF BRUSH SHOULD HAVE THE TEXTURE AND THE LOOK OF A PEARL, AND SLIGHTLY ROUNDED. **IF NOT:** CLEAN BRUSH AND GET A NEW BALL

<p>#1 BALL-FREE-EDGE</p> 	<p>#2 BALL-1/2 OF NAIL-BODY</p> 	<p>#3 BALL-CUTICLE AREA</p> 	<p>#4 BALL-STRESS AREA</p> 
<p>a. larger ball - wet b. PAT from one side of nail-groove to the other side/ Brush is used flat on free-edge</p>	<p>a. small ball - wetter b. apply like nail polish c. STROKE OUT over nail with the touch of a feather</p>	<p>a. small ball - wetter b. apply like nail polish leaving 1/32" space around cuticle c. STROKE OUT over nail</p>	<p>a. small ball - wettest b. apply between #2&#3 balls c. STROKE OUT over nail, building up stress area and smoothing nail</p>

PRACTICE YOUR 5 MAIN NAIL SHAPES.

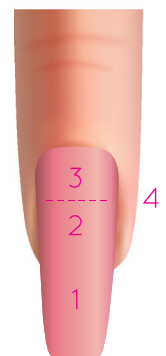
ALMOND



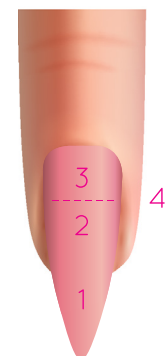
ROUND



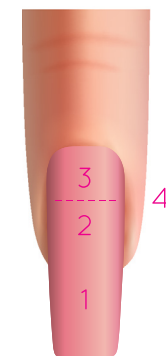
COFFIN



STILETTO



TAPERED



SQUARE

